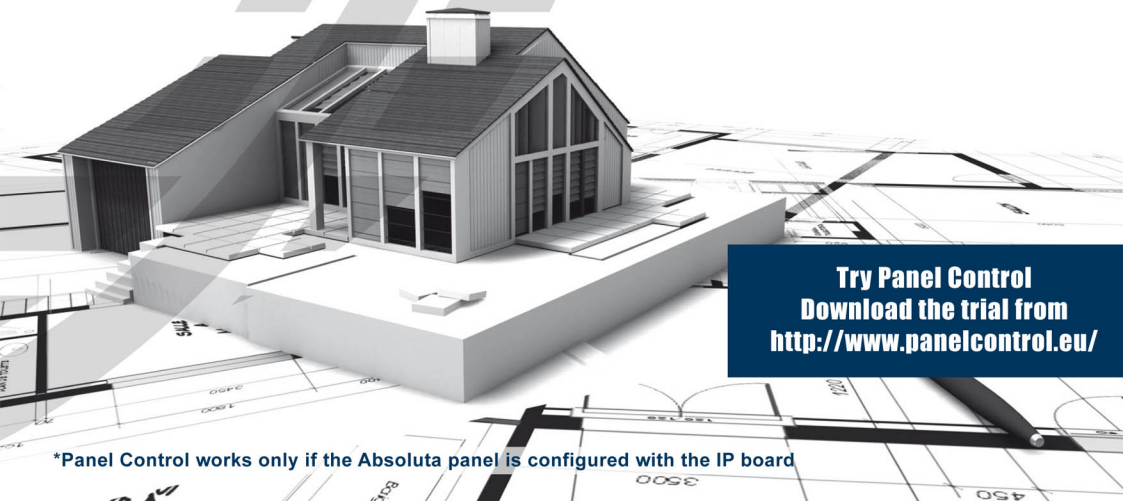


The logo for imaVIS, with 'ima' in white lowercase letters on a dark blue background and 'VIS' in dark blue uppercase letters on a white background.The title 'PANEL CONTROL' is written in white uppercase letters on a red rectangular background. To the right of the text is a decorative graphic of overlapping circles in various shades of brown and grey.A horizontal red banner with the text 'GRAPHIC MAPS FOR BENTEL ABSOLUTA\*: USER MANUAL' in white uppercase letters.

**Try Panel Control**  
**Download the trial from**  
**<http://www.panelcontrol.eu/>**

**\*Panel Control works only if the Absoluta panel is configured with the IP board**

# INDEX

<b>INTRODUCTION .....</b>	<b>2</b>
<b>CHAPTER 1 – Software installation .....</b>	<b>3</b>
1.1 Notes of installation .....	3
1.2 Installation procedure .....	3
<b>CHAPTER 2 – Start up .....</b>	<b>6</b>
2.1 Initial configuration .....	6
2.2 License management .....	6
<b>CHAPTER 3 –General settings .....</b>	<b>8</b>
3.1 Wizard – New device .....	9
3.2 Structure Panel (Physical view) .....	11
3.3 Structure Panel (Logical View) .....	11
3.4 Interactive maps .....	12
3.5 Video Panel .....	15
3.6 Layout Panel .....	16
3.7 Events Panel .....	17
3.8 Storage search panel .....	18
3.9 Alarm panel .....	19
3.10 Event source association panel .....	19
3.11 Dome panel .....	20
3.12 Activity log panel .....	21
<b>CHAPTER 4 – DVR/CAM configuration .....</b>	<b>22</b>
4.1 DVR recordings .....	22
4.1.1 DVR recording filter panel .....	22
4.1.2 DVR recording player panel .....	23
<b>CHAPTER 5 – Menu .....</b>	<b>24</b>
5.1 File .....	24
5.2 View .....	24
5.3 Windows .....	25
5.4 Users .....	26
5.5 Tool bar .....	29
5.6 Information .....	30
<b>CHAPTER 6 – Uninstall .....</b>	<b>30</b>
<b>APPENDIX I – PC minimum requirements .....</b>	<b>31</b>
<b>APPENDIX II – Version features .....</b>	<b>31</b>

# INTRODUCTION

## General information on the software

Panel Control is the supervision software for personal computers to manage Bentel Absoluta panels and video surveillance systems from a single interface with the aid of multilevel graphical maps.

The three main target of Panel Control are the following:

1. to monitor one or more Absoluta panels from Personal Computer;
2. to oversee video system and panels using multilevel graphic maps;
3. video verification thanks the integration of intrusion and videosurveillance systems.

Around these three cornerstones user finds the following characteristics:

*a. live monitoring:* on the maps you have the up-to-date status of all partition and zones and, if there are cameras, the live video streams from cameras;

*b. real time events:* each alarm or alert event triggers an audible and visual event that is highlighted on the maps and on the tree structure, shown in the event table, and if there is an associated camera, is shown in real-time live video stream;

*c. storage search:* you can search all events recorded on the panel (with search filters based on date, time and type) and, where there are cameras of an associated DVR, watch the recorded stream linked to the event; you can also view recorded videos of all the DVR cam;

*d. loading of many panels for unified management.*

- integration of partitions and zones of various panels on the maps and on the tree logical view;
- receive alarms and alerts from all panels simultaneously;
- arming and disarming of all the panels with a single command;
- search of events on all the panels.

Panel Control is designed for maximum flexibility, in order to allow any combination of monitoring and remote and local storage.

# CHAPTER 1 - Software Installation

The software can be easily installed using the CD-ROM or USB support.

## 1.1 Notes for installation

1) Make sure your computer meets the minimum requirements for installing the software (see Appendix I)

💡 For a successfully installation is essential to have on your computer, the last version Sun Java Virtual Machine (JVM), free download here: <http://java.com>.

2) Follow the steps in the installation wizard.

## 1.2 Installation Procedure

**Before starting the installation:** insert the CD-ROM or USB support, start the program, choose the language to install in the menu and press OK.



**Note:** at any time, you may return to previous screens (by clicking the Back button) or cancel the installation (by clicking the Exit button).

**Step one:** click **Next** on the Welcome screen to begin the installation

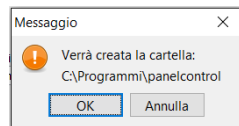
wizard .

**Step two:** information should be read carefully: if the application is already installed on your system make sure it is open before proceeding. After verifying that the program is not open, click on "I've read, proceed with the installation" and press **Next** to continue.

**Step three:** choose the path where the application will be installed. The default is installed in the folder: C:\Programmi\panelcontrol. If you want to install the program in a different location, press **Browse...** and find on your hard drive to a location. Otherwise press **Next** to continue.

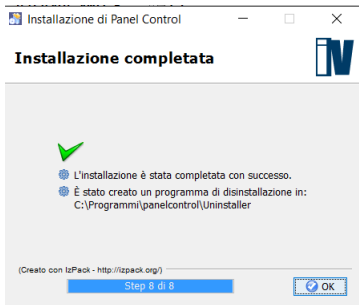
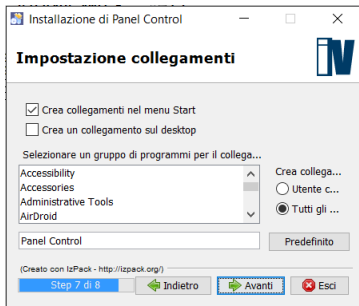
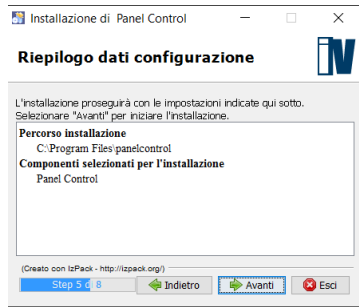
**Notes:** A warning informs the user that will create a folder in the selected route. If you want to make changes press **Cancel**, or OK to proceed. If in the folder already exists a previous installation, you will be advised that the installation process you are going to start will replace the existing files. Then the installation will start after a final "Summary of configuration data"; click **Next** to start the installation.

**Step four:** installation data are summarized. Click **Next** to continue.



**Step five:** set links select items. You can create a shortcut in the Start menu and/or on your Desktop. It is also possible to associate the program to a program group and to the current user or to all users. Click **Next** to continue.

**Step six:** end of the installation and confirmation of proper installation of all packages. Press **OK** and the installation process is terminated



## CHAPTER 2 – Start up

### 2.1 Initial configuration

After installing the software, you must configure the devices to manage. Open the program from the Start menu or using the shortcut on the Desktop.

Before proceeding you must enter credentials to access the system. The default parameters are:

User Name: **admin**

Password: **admin**

Where different users are created on this page you can select them via the pulldown menu.

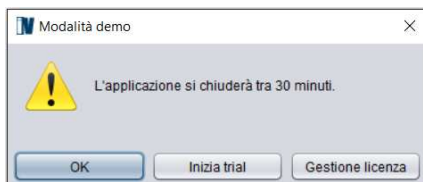


**Notes:** during the program closing, the user will be prompted for the password to prevent the closing by unauthorized user.

### 2.2 License management

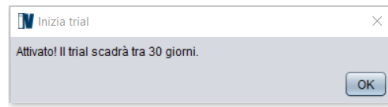
At the first software opening, the panel will appear stating that the program is in DEMO version and remains active for a maximum time of 30 minutes, after which it automatically closes.

To avoid the closing, access to the **Start Trial** or **License Management** page.



### **Trial start**

You can activate the program in trial mode to test all the features for a maximum of 30 days. Trial can be activated only once.



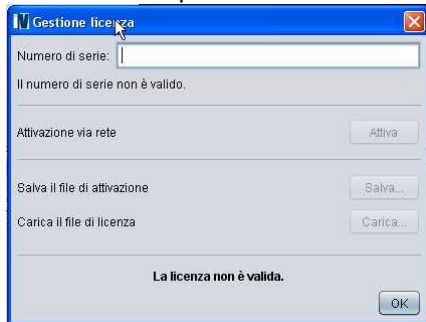
To activate the trial, it is necessary to have an active Internet connection to connect to the license management server.

### **License management**

In this panel you must enter a valid serial number (license) and proceed with activation, which may occur in two ways.

- **Via internet**

To activate via network, the user must be equipped with a valid license provided by the manufacturer and the personal computer where you installed the program must be connected to the Internet. Once inserted the serial number press **Active**. If the button is disabled, the user must verify the inserted license. Pressing **Active** the program will connect to the server manufacturer's e will ensure that the license has not already been enabled for the use by another computer.



- **By files**

If the PC is not connected to the network the user must inserted the serial number and save the activation file. ".id" on a USB key or directly to a PC in the LAN that has the ability to connect to the Internet. Open a web browser (Internet Explorer, Mozilla, ...) and type the following address <http://licenze.videosrv.com>; upload the file previously extracted from ProVision in the section indicated.

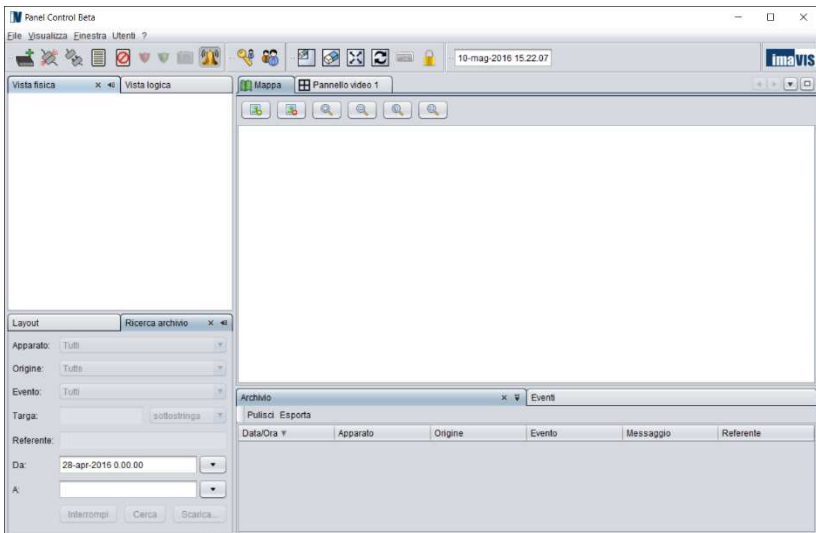
After verification of the activation file the server will return a license file with the extension ".lic"; to complete the activation, load this file into "licensing" mask using the appropriate button.

At the bottom of the form always shows a message if your license is valid or not.




## CHAPTER 3 – General settings

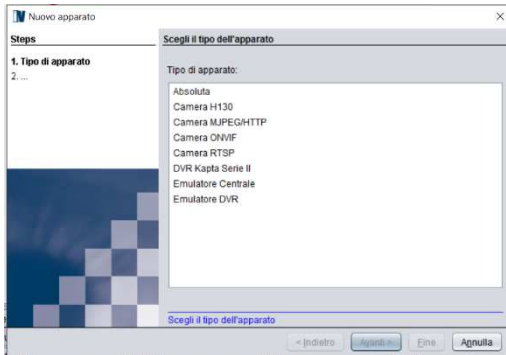
At the first access, the interface will present the layout as in the image below. The user can change the layout by closing or moving the panels according to the requirements; exiting from the program all changes will be stored and then maintained for the next start. If the PC where the program is installed, is equipped with a video card with multiple outputs, it is possible to deploy the panels as needed holding the left mouse button and dragging the panel to the desired position. To open the different panels, select the button **Window** in the main menu and open the panel to be seen.



The maximum number of devices that can be inserted depends on the type of license.

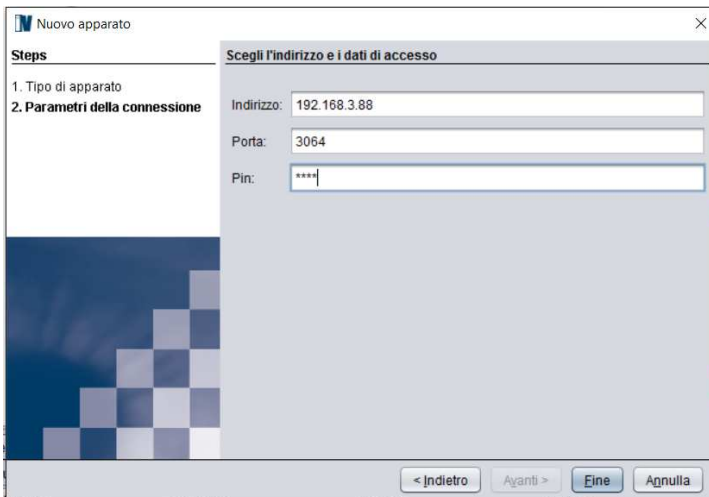
### 3.1 Wizard – New device

To add a new device, press the icon  or click the right button on the symbol of the world in the panel frame and click on **New device** .... You will get the Wizard to accommodate the new device: first you need to define the device and then press **Next**.



If you add an Absoluta panel you must fill in the form with:

- IP address
- Web port (preconfigured at default 3064)
- Pin



To know the **IP address of the Absoluta panel** digit the following sequence of commands on the panel keyboard:

- Digit the **PIN** and press **ENTER**
- Press **ENTER** several time until you can read  
**USER**  
**1act. 2prg 3vis.**
- Press **3**
- Pres **a** (top arrow) until you can view the menu  
**3.5 IP STATUS**
- Press **ENTER** and appears the **panel IP**
- To exit press **ESC** several times

If the parameters are correct the program will include the device in the structure panel. If data are incorrect or the device is not reachable the program returns the message: "**The device is unreachable**". In this case, press **Back** and check your data or the connection of the device.

If you choose to add a camera or a DVR, follow the instructions of the

**NOTE**

The Absoluta panel accepts only one connection at a time on the IP board.

The connection from APP has the priority: when the user connects from the smartphone the Panel Control connection is interrupted from the panel to let the smartphone to connect.

At the end of the APP connection session, the Panel Control software automatically reconnects to the panel.

form configuring all the fields.

At any time, you can exit the wizard by pressing **Cancel**.

### 3.2 Structure panel (Physical view)

The **structure** panel allows to view the different devices that are configured by the user.

For each connected device they will be displayed the device name and the names of cameras connected to it (partitions and zones for panels, cameras for DVR).

You can change the name of panels, DVRs and cameras: click with the right button on the icon, select **Rename** and type the new name. Partitions and zones names can be changed only in the configuration of the panel.



Clicking with the right button of the mouse on a device icon you can do the following operations:

- connect or disconnect the device;
- visualize cameras on video panel (only DVRs and cameras);
- arm (global) or disarm the panel (only panels);
- enable or disable event notification;
- enable or disable alarm notification;
- run configured partial arming (only panels)
- rename the device;
- remove the device;
- view and edit the properties of the device.

To view the live stream, you must click on the device or single camera and drag the icon in a frame of the video panel (drag and drop).

### 3.3 Structure panel (Logical view)

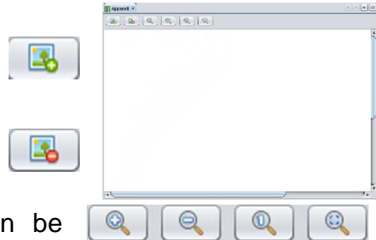
The **Logical View** panels contains all the devices load on the graphical maps (see next paragraph) and allows you to locate the devices and their components (partitions, zones, cameras) following the multilevel map structure but independently from the way they are connected on panels and DVRs. In this panel you can find all the functionalities of the physical view panel.

### 3.4 Interactive maps

Multilevel maps allow a geographical localization of panels and video systems. Default map is visible in the internal area of the software.

You can add a new image by using the first icon on the top left and choosing the image to load from the file system of the PC.

To delete the image, press the second icon.



The visualization of the image can be changed by using the 4 buttons Zoom + / Zoom - / Zoom “1” (back to the original resolution) / Zoom “adapt to screen” (adapt the image to the view dimension).

#### ***Multilevel maps***

You can also create maps with more detailed level. Use the right button on the map icon on the Logical View and press “Add map”; the map will appear in the panel structure and you can drag and drop it on the main map. Once you open a sub-map you can drag the devices icons from the panel structure directly on the map.



Clicking on the second level map, the next level of the map will be opened and again the components could be located by dragging their icon on the map and so on.



### ***Partition drawing***

By dragging a “partition” component on a map, the software allows to draw a polygonal area as complicated as needed.



While you are drawing the are all the points of the polygon can be repositioned. To close the polygon, you must point the mouse in the first drawn point and double click.

Once the partition has been added on the map, it is visible also on the logical view; clicking with the right button of the mouse on the partition icon it is possible to modify the polygonal area.

### ***Zones and cameras placement***

By dragging a “Zone” or “Camera” component on the map, the software allows to place an icon which represents it.

Once the zone or camera has been added on the map, it is visible also on the logical view under that map.

### ***Colours, icons and alarm signals***

When the partition is unarmed, the background of its polygonal area on the map is green and the icon on the tree structure is a green “D”. When the partition is armed the background becomes red and the icon is a red “I”.

When an armed partition is alarmed, its polygonal area is rounded with a red border.

The status of each zone is represented on both the map and the tree structure by a round icon green (OK) or blinking red (fault, tamper, alarm).

Each camera is represented by a specific icon which blinks when the camera is alarmed.

### ***Other characteristics***

When a zone or a camera are alarmed, by clicking on the icon on the map the video flow of the associated camera will appear on the **Video** panel.

Anytime you can come back to a higher level map by clicking on the arrow located in the top left corner.

From the **Structure panel** you can rename or change the order of the components by clicking with the right button of the mouse on the map. Anytime you can move from one device to another or delete a map from a map by dragging the icon in the desired location.

### 3.5 Video Panel


The **Video** panel allows viewing the live stream from the various connected devices.



To change the display mode, it must be chosen the desired **Layout** panel (see next paragraph).

Pressing the right button on each video frame opens a menu where it is possible:

- empty the selected video panel;
- empty all panels;
- display video Panel in full screen;
- display video panel in 16:9 format.

Pressing the button  at the top right it is possible to close all other open panels and keep only the video panel Full-screen.

Pressing the down arrow opens a menu of video panels opened and it is possible to change from one to another.



### 3.6 Layout Panel

The **Layout** panel allows to configure and manage video panels.

At the top it can be decided the number and size of display devices by pressing the button



With the keys in the middle of the panel, it can be deleted a single box or all the boxes and can be decided whether to put the selected video panel in full screen or 16:9 modes.

At the bottom you can save the layout settings: pressing **Save** will open a new tab in which will appear by default the name of the opened Video panel (e.g. Video Panel 1, Video Panel 2, ...) which can be changed. The saved layout then appears in menu and if multiple layouts are configured, it is possible to choose which to display. Pressing the **Delete** key will delete the configured layout.

In the bottom panel you can also activate the switcher between the saved layouts. Press **Config** and choose the layouts to cycle and the time intervals in seconds between one and another. Once the configuration has been ended, by pressing **Cyclic** the Video panel will alternate the selected layouts. The cyclic stops when the user changes the Video panel showing a video camera in full screen mode, adding one camera or performing other operations.




### 3.7 Events panel

The **Events** panel allows to view alarms coming from different devices.



The screenshot shows a window titled "Eventi" with a sub-header "Pulisci" and "Player registrazione". Below is a table with the following data:

Timestamp	Nome dispositivo	Numero canale	Tipo evento
gio 15 gen 2009 - 19:07:38	Sistema Milano	1	VIDEOLOSS_END
gio 15 gen 2009 - 19:07:36	Sistema Milano	1	Videoloss
gio 15 gen 2009 - 19:07:31	Sistema Roma	1	Motion
gio 15 gen 2009 - 19:07:27	Sistema Roma	2	Motion
gio 15 gen 2009 - 19:07:27	Sistema Roma	3	Motion


To enable the reception of events, press the icon .

From that moment on you will see different types of events:

- arming, disarming, connection, disconnection, alarm, tamper, fault, bypass for the panels;
- motion/Videoloss/Input for DVRs.

The events can be sorted by clicking on the single column (with a click will be in ascending order, with 2 in descending order) and specifically on the following parameters:

- date and time;
- device;
- channel;
- event;
- message.

The entire table can be cancelled by pressing the **Clear** button. To stop sending the event notification, just press the icon .

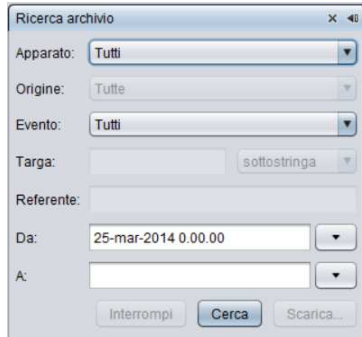
It is also possible to separately manage the reception from a device. Click on the device panel structure with the right mouse button and select the start/stop event notification.

If it is allowed by the device, it is also possible to see the event alarm registration. Holding down the left mouse button you can drag the event from an empty table in the Video panel and the program will start the corresponding recorded video.

At the top of the table it is also possible to export the events shown in the table below saving a file that you can open with Excel or Notepad.

### 3.8 Storage search panel

In the **Storage search** panel, you can query the history log of the panel to see the list of its events.



You can filter the research by using the following fields:

- **Device:** look for in a specific system or, leaving the **All** default, the research will be done on all the connected panels.
- **Event:** look for a specific type of event: generic, alarm, tamper, fault, bypass, test.
- **Data:** define the interval of the history log research.

By pressing the **Search** button, the results are shown in the **Storage** panel with all the details.

Archivio			
Pulisci Esporta			
Data/Ora ▾	Apparato	Evento	Messaggio
3-mar-2016 17.13.42	Absoluta Casa	Generico	Rich. Disinser. / Dove: Tastiera #0 / Chi: Codice #0 / Partizioni: 1-8
3-mar-2016 17.12.45	Absoluta Casa	Generico	Riconosciuto Cod / Dove: App / Chi: Codice #0
3-mar-2016 17.12.35	Absoluta Casa	Allarme	Allarme di zona / Dove: Zona on board #1 / Chi: Zona #1 / Partizioni: 2
3-mar-2016 17.12.35	Absoluta Casa	Allarme	Allarme di area / Partizioni: 2
3-mar-2016 17.12.29	Absoluta Casa	Manomissione (ripristino)	Sabotaggio zona / Dove: Zona on board #0 / Chi: Zona #0 / Partizioni: 1
3-mar-2016 17.12.21	Absoluta Casa	Allarme	1 zona in allar. / Dove: Zona on board #2 / Chi: Zona #2 / Partizioni: 3
3-mar-2016 17.12.21	Absoluta Casa	Allarme	Allarme di zona / Dove: Zona on board #2 / Chi: Zona #2 / Partizioni: 3
3-mar-2016 17.12.21	Absoluta Casa	Allarme	Allarme di area / Partizioni: 3
3-mar-2016 17.12.20	Absoluta Casa	Manomissione	Sabotaggio zona / Dove: Zona on board #0 / Chi: Zona #0 / Partizioni: 1
3-mar-2016 17.01.36	Absoluta Casa	Generico	Riconosciuto Cod / Dove: App / Chi: Codice #0
3-mar-2016 16.37.57	Absoluta Casa	Generico	Riconosciuto Cod / Dove: App / Chi: Codice #0
3-mar-2016 16.37.42	Absoluta Casa	Generico	Inser. eseguito / Partizioni: 1-8
3-mar-2016 16.37.41	Absoluta Casa	Generico	Riconosciuto Cod / Dove: Tastiera #0 / Chi: Codice #0 / Partizioni: 1-8
3-mar-2016 16.37.41	Absoluta Casa	Generico	Rich. Ins. Tot. / Dove: Tastiera #0 / Chi: Codice #0 / Partizioni: 1-8

At the top of the table it is also possible to export the events shown in the table below saving a file that you can open with Excel or Notepad.

### 3.9 Alarm panel

The Alarm panel is similar to a video panel (it is possible to unlock it and move on a second monitor) and it is automatically opened when alarm events happen. To activate it you must go on the device and select the voice “Alarm” by clicking with the right mouse button.

This panel is filled by video of the cameras which are alarmed. The last alarmed camera will be always in position 1 and when a new alarmed camera arrives, the previous moves on the position 2 and so on.

If a camera is already alarmed, it won't be duplicated but it will be moved in Position 1.

To this alarm is associated the sound alarm of the Operating System which is configurable by the user and can be disabled by pressing the bell icon on the menu bar.

Moreover, to alert the user, the border of the alarm panel starts blinking with a yellow border.

### 3.10 Event source association panel

With the panel the user can associate a camera of the video system to each partition or zone of the panel.

Each partition and zone is listed and the user can associate it with a video device and one of its channel showing the menu.

Using this association, the user will play the recorded video of the camera (if the video recording is active in the DVR) at the time of the alarm of the correspondent partition or zone simply by dragging the event from the event panel to the video panel.

Apparato	Origine	Apparato associato	Canale associato
Absoluta 16	Interno cucina	DVR	CAMERA01
Absoluta 16	Interno salotto	DVR	CAMERA02
Absoluta 16	Finestra camera		
Absoluta 16	Finestra cameretta		
Absoluta 16	Finestra bagno	DVR	CAMERA06
Absoluta 16	Interno camera		
Absoluta 16	Interno cameretta		
Absoluta 16	Interno corridoio		
Absoluta 16	Portone garage		
Absoluta 16	Interno garage		
Absoluta 16	Esterno vialetto		
Absoluta 16	Esterno garage		
Absoluta 16	Esterno giardino		

### 3.11 Dome panel

The **Dome** panel allows to manage Dome cameras connected to different devices.

To activate the panel a dome camera must be selected in the **Video** panel.

In addition to control the lateral and vertical camera movement by pressing the corresponding arrow, you can operate the zoom, iris open and focus the camera.

The command at the bottom allows to determine the speed of movements, to adjust the rotation on the base of available network bandwidth.

On the right part is possible to manage the advanced functionalities: home position, preset, pattern and tour.



#### **Home position**

By pressing the “Go” button next to Home the system will call the 34 preset of Pelco D protocol. On the DVR must be set this protocol and the 34 preset.

#### **Preset dome**

By choosing the number from menu and pressing the “Go” button next to Preset la camera will move on the correspondent preset. It is possible to enter in the dome camera OSD menu loading the 95 preset of the Pelco D protocol.

#### **Call patterns**

By choosing the number from menu and pressing the “Go” button next to Pattern, the camera will start the correspondent pattern.

#### **Call tours**

By choosing the number from menu and pressing the “Go” button next to Tours, the camera will start the correspondent tour.



## CHAPTER 4 – DVR/CAM configuration

### 4.1 DVR Recordings

Depending on the equipment it is possible to enable and review the recordings. To see the recordings of the DVR / NVR some panels must be opened:

- *Structure;*
- *Recordings filter;*
- *Recordings player;*
- *Video.*



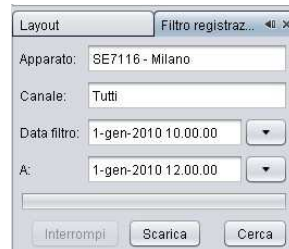
#### 4.1.1 DVR Recording Filter Panel

The **Recording Filter** panel allows to search recordings within the device and to display in the **Video** panel or to download to the PC.

To begin your search, the camera or device (to view / download all cameras simultaneously) must be selected in the panel **Structure**; the **Recording Filter** panel will become active filter records to determine the search parameters. At the top it will be shown the name of the device and the selected channel (or all if the device has been selected) on the **Structure** panel.

To view video sequences in the **Video** panel, first it must be chosen the date and time of the search. Then pressing the **Search** button, the video will automatically appear in the first available panel layout and also the **Player Recording** panel it will be opened with the timeline showing the recording of the camera or device selected in the 24 hours.

Whenever there are no boxes available in the Video panel, the program warns that all panels are taken. The solution is to free the required number of boxes in the **Video** panel.



First select the camera or device and the start date / time, then select the end date / time and finally press the **Download** button. At this point the user will be asked for the location of the destination folder and, once confirmed, the program will start downloading the recording requested. A scroll bar indicates the percentage of the downloaded file.

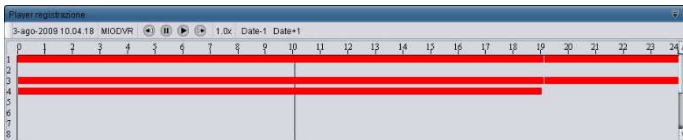
In case the file is larger than 2 GB the program will automatically split into multiple files with the name "file\_name\_2", "file\_name\_3" and so on. When you ask to download of a video, automatically it is created also a file with the same name but with an extension ".sub" where are stored the subtitle with the requested data. Opening the video file with the video player (we suggest the use of free video player VLC) the video will show date, hour and cam name overlaid.

### CAUTION

The download time can be quite high if the selected range is very large. To reduce the time, it is necessary to stop the download (by pressing the **Stop** button) and to change the parameters.

## 4.1.2 DVR Recordings Player Panel

The **recordings player** panel is enabled only when user activates a search for the camera (or device) also selecting date and time.



Inside the panel the user finds the time lines of recordings and a line on the chosen time. In the window it is highlighted when the recording is present during the day with the superposition of a red line. In case of continuous recording the bar would be uniform. In case of motion recording the bar might be fragmented, depending on the number of records on the device. Clicking on a different time the recorded video of all cameras will move to the chosen time. It is also possible to pause and restart the video playback or to change the speed by pressing the buttons above the timeline. Finally it is possible to move the timeline to the next or to the previous day by pressing **Date-1** or **Date+1**.



## CHAPTER 5 – Menu

The main menu allows to manage the entire program and presents the following items: File, View, Window, Users, Guide.

### 5.1 File

In this menu the user can add a **New device ...** and can exit the program by pressing the **Exit** button. To close the program, the user must enter the password used during start up.

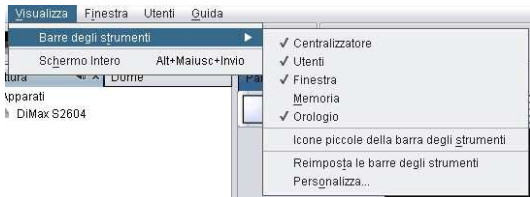
### 5.2 View

In the **View** menu the user can decide what to display in the toolbar and screen choosing among the following components:

- *Centralizer*: commands to add devices, to connect / disconnect devices and to enable / disable the events receipt;
- *Users*: commands to add new users or change passwords;
- *Window*: hot keys of the menu window (full screen and reset);
- *Memory*: monitoring of used memory;
- *Clock*: time and date.

It is also possible to reduce the size of icons on the toolbar by pressing **Small icons in the toolbar** and resetting the toolbar by pressing **Reset**.

Pressing **Customize** you can set another toolbar drag over the desired icon.



## 5.3 Window

In the **Window** menu you can manage different panels, deciding if show / hide them.

### **Default**

- New video panel
- Physical view
- Logical view
- Layout
- Events
- Alarms
- Activity log

### **DVR**

- All DVR windows
- Dome
- Recording player
- Recording filters

### **Applications**

- All application windows
- Storage
- Storage search
- Snapshot

### **More**

- Events detail
- Event source association

### **Actions**

- Windows configuration (float to drag in other monitor or dock to relock, ...)
- *Reset Windows*, back to the initial position
- Close the window

## 5.4 Users

In this menu you can manage groups, users and their passwords to access the program. The default credentials are:

Username: **admin**

Password: **admin**

The user management is limited to user's level administrator.

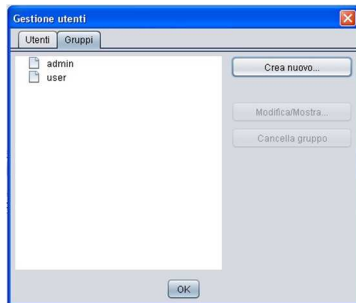
### Users group management

In the system there are two default user levels:

- *User* who is not allowed to:
  - add devices;
  - add maps;
  - add users.
- *Administrator* who has complete control of the system.

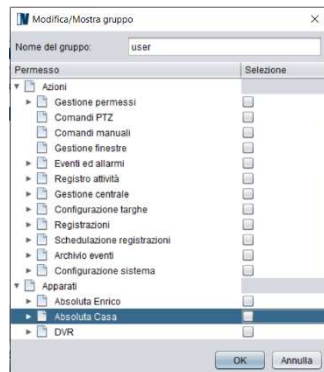
To modify group permission, you must select it and press on modify/show.

It is possible to create new group of users, assigning the set of permissions.



Permissions are listed in a tree structure; for each group you can select the set of permissions by clicking the correspondent check box. All the users belonging to a specific group have the same permissions.

Permissions are divided in 2 categories: **Actions** and **Devices**.



## Actions

In this category it is possible to enable/disable:

- **Permission management**
  - *User management*, modify the group at a specific user, create/delete users, change user password
  - *Group management*, modify/create/delete a group (it is not possible to modify the group of the logged user or delete a group which still includes at least one user. To delete a group there should be no user belonging to the group).
- **PTZ commands** to send PTZ commands PTZ to dome cameras
- **Manual commands** to send manual command to DVR
- **Windows management** to lock all the windows as they are defined by the administrator to avoid that basic user can move/close or modify the size of the windows.
- **Events and Alarms**
  - *Alarms*, enable/disable alarm notification in the panel
  - *Events*, enable/disable live events notification
  - *Source events association*, to configure the source of events from the panel Source events association.
  - *Modify/Export table*, clean/export events which are shown in the Event panel table.
- **Activity log** to delete/export the activity logs
- **Recordings**
  - *Recordings download*, to download parts of recording from the Recording Filter panel (download button)
  - *Recordings Search*, per search and visualize parts of recordings from the Recording Filter panel (find button)
  - *Recorded events visualization* to visualize the video recorded during an event (drag and drop the event on a Video Panel)
- **Events storage**
  - *Event download*, to download events stored in the Database using the Download button
  - *Event search*, to search and view in the table events stored in the Database using the Find button

- *Modify/Export table*, to clean/export the events listed in the event table of the storage panel
- **System configuration**
- *Panel/DVR connection* to connect/disconnect
  - *Panel/DVR configuration*, to create/delete them, modify their local name or other properties, move them in the tree structure
  - *Maps configuration*, to create/delete/modify maps and displacement of Panel/DVR in the Maps Panel

## Devices

For each group you can decide which device and what associated cameras can handle and see. To obtain permission relating to a channel is also necessary to have the permission concerning the device that contains it. The interface will only be visible objects that the user has permission to use. When a user adds a new device, its group gains access to that device.

CAUTION: the "admin" group is special: can't be removed and it always has all the available permissions.

## User Management

In this interface you can add a new user and assign the level and the corresponding password.

Once inserted a new user name appears in the list and you can add more by pressing the **New Account** again.

You can also change the password or the selected user group management. To change the user group selected simply choose it from the drop down menu.



The image shows a dialog box titled "Crea nuovo utente" (Create new user). It has a blue title bar with a close button. The dialog contains the following fields and controls:

- Nome utente**: A text input field.
- Livello**: A dropdown menu currently showing "Administrator".
- Password**: A text input field with asterisks for masking.
- Conferma password**: A text input field for password confirmation.
- OK** and **Cancel**: Two buttons at the bottom right.















## Password change

This entry allows the user level users to change their password. You do not need the level Administrator to access this form.

## 5.5 Tool bar

In the toolbar are shortcuts for frequently used actions which are summarized in the preceding paragraphs.

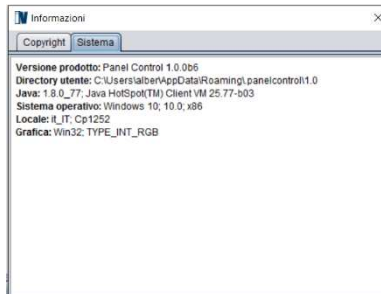
We list briefly the meaning of each icon:

	Add a new device
	Connect/disconnect all the devices
	Start/Stop the event notification of all the devices
	Arming / Disarming of all the panels
	Camera snapshot
	Alarm sound activation/deactivation
	Password change and user management
	Empty 1 single video panel or all panels
	<b>Full screen</b> – You can view the video stream full screen. To return to the previous display, simply press the ESC key or by right mouse button to uncheck "Show full screen".
	<b>Reset windows</b> – To reset the screen and back panels in the starting configuration.
	Virtual keyboard to touch screen management
	Lock button (to unlock insert the password)
	Date and time
	Graph of used memory

## 5.6 Information

From **Help** menu you can access the page of the copyright system. Also you can access the page system which contains the following information:

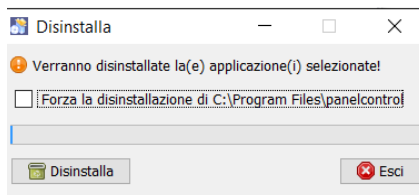
- Product Version;
- Java version installed on the PC;
- System is installed on the program;
- Folder containing the software and configurations.
- Internal information
- Graphical board type



## CHAPTER 6 – Uninstall

To uninstall the program, you must make sure it is not running, and select in the **Start→Programs→PanelControl** menu the voice **Uninstaller**.

This opens the form shown in the figure and pressing the **Uninstall** program will be removed from the system.



## APPENDIX I – PC minimum requirements

<b>RAM</b>	1 GB
<b>Processor</b>	Pentium Core 2 or higher
<b>Video card</b>	PCI Express 256 Mbps or higher
<b>HDD</b>	80 GB or higher
<b>Network card</b>	10/100 or higher
<b>Mouse</b>	Yes
<b>Operating System</b>	Windows Vista, Windows 7, Windows 8.x, Windows 10

## APPENDIX II – Version features

<b>Features</b>						
<b>VERSION</b>	<b>Panel Number</b>	<b>Video channel N.</b>	<b>Maps</b>	<b>Events</b>	<b>Alarms</b>	<b>Multi-screen</b>
Light	1	-	✓	✓	✓	✓
Base	1	4	✓	✓	✓	✓
Plus	2	Unlimited	✓	✓	✓	✓
Full	4	Unlimited	✓	✓	✓	✓
Enterprise	Unlimited	Unlimited	✓	✓	✓	✓





**imavis**

[www.panelcontrol.eu](http://www.panelcontrol.eu)

**IMAVIS S.r.l.**

Largo Perderzana, 2 - I-40055 Castenaso (BO) - Italy - +39 051 6012120

Via Trento, 5/2 - I-16145 Genova - Italy - +39 010 8609370

[info@imavis.com](mailto:info@imavis.com) - [www.imavis.com](http://www.imavis.com)