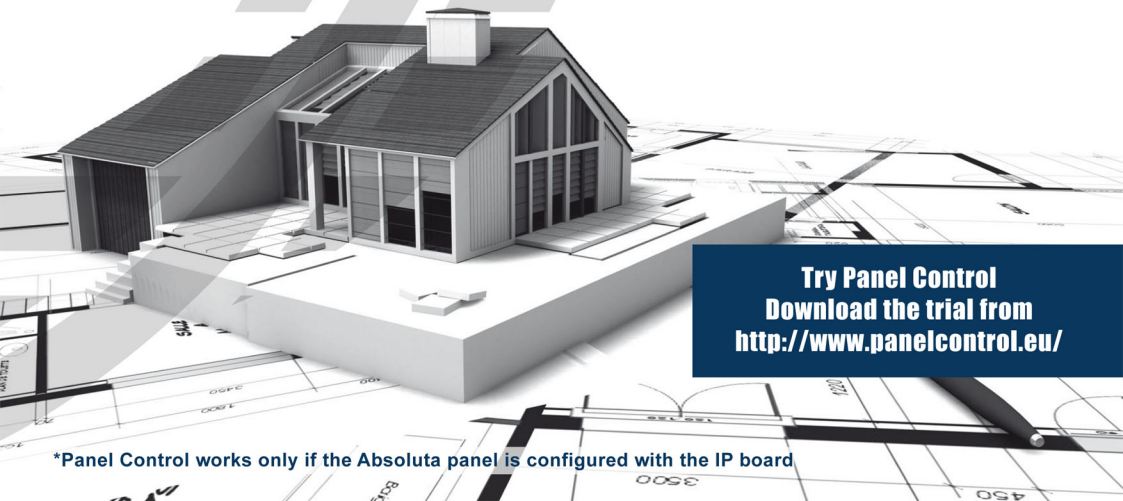


The logo for imaVIS, with 'ima' in white lowercase letters on a dark blue background and 'VIS' in dark blue uppercase letters on a white background.The title 'PANEL CONTROL' is written in white uppercase letters on a dark orange rectangular background. To the right of the text is a cluster of overlapping circles in various shades of brown and grey, resembling a stylized globe or a data visualization.A solid orange horizontal banner containing the text 'GRAPHIC MAPS FOR BENTEL ABSOLUTA*: GUIDE TO THE FIRST USE' in white uppercase letters.

GRAPHIC MAPS FOR BENTEL ABSOLUTA*: GUIDE TO THE FIRST USE



Try Panel Control
Download the trial from
<http://www.panelcontrol.eu/>

*Panel Control works only if the Absoluta panel is configured with the IP board

INTRODUCTION

Panel Control è the **supervision software** to manage **Bentel Absoluta** panels.

It allows to upload **graphic maps** on multiple levels and to **manage** in a simple and intuitive way the alarm **events** and the **status** of the panels and their components.

It is possible to add video components (network cameras, DVR and NVR) for an **integrated control of intrusion and videosurveillance systems**; together with the management of live events, the user can search for recorded events in the archives of Bentel panels and DVRs.

1 – Panel Control software installation

Download the last version of the Panel Control software at <http://www.panelcontrol.eu> and follow the instructions of installation procedure.

For a successfully installation is essential to have on your computer, the last version Sun Java Virtual Machine (JVM), free download here: <http://java.com/it/>

2 – Access to Panel Control

Open the program from the Start menu and enter credentials to access the system: **admin** password: **admin**




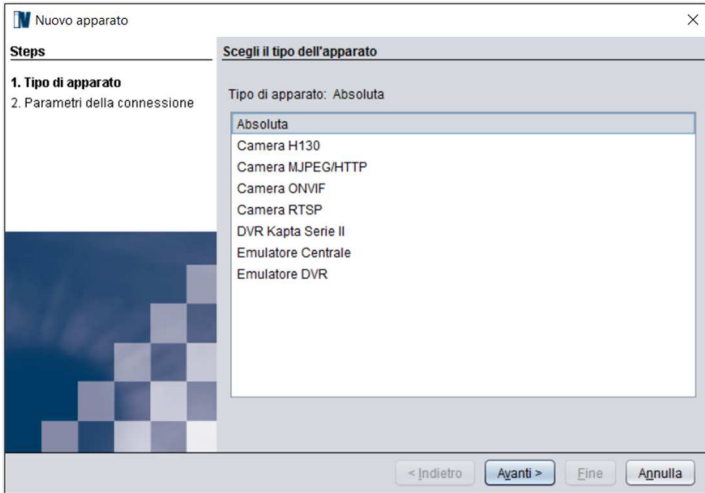
The program starts in DEMO version and remains active for a maximum time of 30 minutes, after which it automatically closes.

It is possible to **activate** the program in **Trial mode** (Internet connection is mandatory) to test all the features for a maximum of 30 days. Trial can be activated only once.

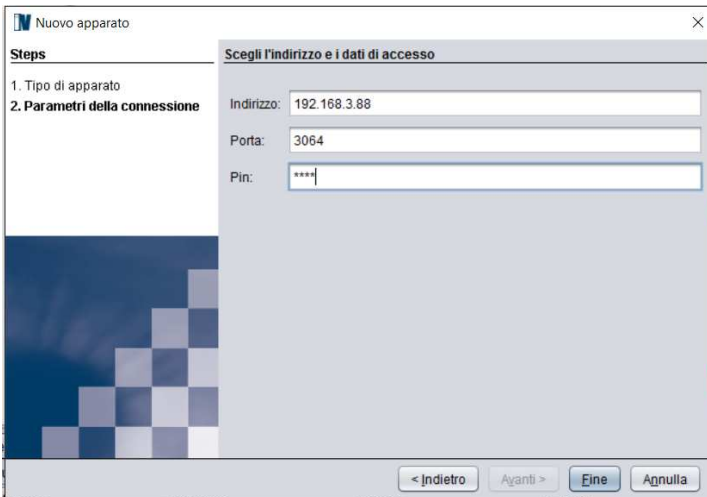
Or you can a valid serial number (license) and proceed with activation.

3 – Add devices

To add new devices, press on the icon  Select **Absoluta** and press **Next**



Insert the *IP address* and the panel *PIN* (port is preconfigured):



To know the **IP address of the Absoluta panel** digit the following sequence of commands on the panel keyboard:

- Digit the **PIN** and press **ENTER**
- Press **ENTER** several time until you can read
USER
1act. 2prg 3vis.
- Press **3**
- Pres **a** (top arrow) until you can view the menu
3.5 IP STATUS
- Press **ENTER** and appears the **panel IP**
- To exit press **ESC** several times

If data are incorrect or the device is not reachable the program returns the message: "**The device is unreachable**". In this case, press **Back** and check your data or the connection of the device.

NOTE

The Absoluta panel accepts only one connection at a time on the IP board.

The connection from APP has the priority: when the user connects from the smartphone the Panel Control connection is interrupted from the panel to let the smartphone to connect.

At the end of the APP connection session, the Panel Control software automatically reconnects to the panel.

To **add a camera or a DVR** follow the instructions of the form configuring all the fields.

4 – Action on the panel

Once the device is added, it is shown in the Physical View Panel and clicking with the right button of the mouse on the device icon you can do the following operations:



- connect or disconnect the device;
- visualize cameras on video panel (only DVRs and cameras);
- arm (global) or disarm the panel (only panels);
- enable or disable event notification;
- enable or disable alarm notification;
- run configured partial arming (only panels)
- rename the device;
- remove the device;
- view and edit the properties of the device.

5 – Adding maps

Multilevel maps allow a geographical localization of panels and video systems. Maps and their components are shown in the **Logical View**.

You can add a new image by using the first icon on the top left and choosing the image to load from the file system. To delete the image, press the second icon.



By **dragging** a “**partition**” component on a map, the software allows to draw a polygonal area as complicated as needed.



While you are drawing the area all the points of the polygon can be repositioned. To close the polygon, you must point the mouse in the first drawn point and double click.

When the partition is unarmed, the background on the map is green and the icon on the tree structure is a green “D”. When the partition is armed the background becomes red and the icon is a red “I”.

When an armed partition is alarmed, its polygonal area is rounded with a red border.

By **dragging** a “**zone**” or “**Camera**” component on a map, the software allows to place an icon which represents it.

The status of each zone is represented on both the map and the tree structure by a round icon green (OK) or blinking red (fault, tamper, alarm). Each camera is represented by a specific icon which blinks when the camera is alarmed.

6 – Video panel


The **Video** panel allows viewing the live stream from the various connected devices.



To change the display mode, it must be chosen the desired **Layout** panel (see next paragraph).

Pressing the right button on each video frame opens a menu where it is possible:

- empty the selected video panel;
- empty all panels;
- display video Panel in full screen;
- display video panel in 16:9 format.

Pressing the button  at the top right it is possible to close all other open panels and keep only the video panel Full-screen.

Pressing the down arrow opens a menu of video panels opened and it is possible to change from one to another.

7 – Events panel

The **Events** panel allows to view alarms coming from different devices.

Timestamp ▼	Nome dispositivo	Numero canale	Tipo evento
gio 15 gen 2009 - 19:07:38	Sistema Milano	1	VIDEOLOSS_END
gio 15 gen 2009 - 19:07:36	Sistema Milano	1	Videoloss
gio 15 gen 2009 - 19:07:31	Sistema Roma	1	Motion
gio 15 gen 2009 - 19:07:27	Sistema Roma	2	Motion
gio 15 gen 2009 - 19:07:27	Sistema Roma	2	Motion

To enable the reception of events, press the icon

From that moment on you will see different types of events:

- arming, disarming, connection, disconnection, alarm, tamper, fault, bypass for the panels;
- motion/Videoloss/Input for DVRs.

The events can be sorted by clicking on the single column (with a click will be in ascending order, with 2 in descending order) and specifically on the following parameters:

- date and time;
- device;
- channel;
- event;
- message.

The entire table can be cancelled by pressing the **Clear** button. To stop sending the event notification, just press the icon

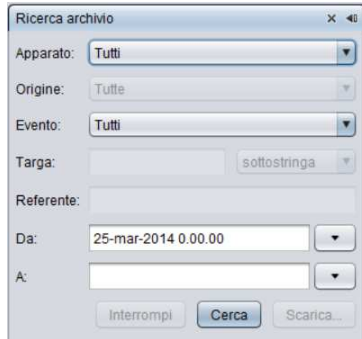
It is also possible to separately manage the reception form a device. Click on the device panel structure with the right mouse button and select the start/stop event notification.

If it is allowed by the device, it is also possible to see the event alarm registration. Holding down the left mouse button you can drag the event from an empty table in the Video panel and the program will start the corresponding recorded video.

At the top of the table it is also possible to export the events shown in the table below saving a file that you can open with Excel or Notepad.

8 – Storage search panel

In the **Storage search** panel, you can query the history log of the panel to see the list of its events.



You can filter the research by using the following fields:

- **Device:** look for in a specific system or, leaving the **All** default, the research will be done on all the connected panels.
- **Event:** look for a specific type of event: generic, alarm, tamper, fault, bypass, test.
- **Data:** define the interval of the history log research.

By pressing the **Search** button, the results are shown in the **Storage** panel with all the details.

Archivio			
Pulisci Esporta			
Data/Ora ▾	Apparato	Evento	Messaggio
3-mar-2016 17 13.42	Absoluta Casa	Generico	Rich. Disinser. / Dove: Tastiera #0 / Chi: Codice #0 / Partizioni: 1-8
3-mar-2016 17 12.45	Absoluta Casa	Generico	Riconosciuto Cod / Dove: App / Chi: Codice #0
3-mar-2016 17 12.35	Absoluta Casa	Allarme	Allarme di zona / Dove: Zona on board #1 / Chi: Zona #1 / Partizioni: 2
3-mar-2016 17 12.35	Absoluta Casa	Allarme	Allarme di area / Partizioni: 2
3-mar-2016 17 12.29	Absoluta Casa	Manomissione (ripristino)	Sabotaggio zona / Dove: Zona on board #0 / Chi: Zona #0 / Partizioni: 1
3-mar-2016 17 12.21	Absoluta Casa	Allarme	1 zona in allar. / Dove: Zona on board #2 / Chi: Zona #2 / Partizioni: 3
3-mar-2016 17 12.21	Absoluta Casa	Allarme	Allarme di zona / Dove: Zona on board #2 / Chi: Zona #2 / Partizioni: 3
3-mar-2016 17 12.21	Absoluta Casa	Allarme	Allarme di area / Partizioni: 3
3-mar-2016 17 12.20	Absoluta Casa	Manomissione	Sabotaggio zona / Dove: Zona on board #0 / Chi: Zona #0 / Partizioni: 1
3-mar-2016 17 01.39	Absoluta Casa	Generico	Riconosciuto Cod / Dove: App / Chi: Codice #0
3-mar-2016 16 37.57	Absoluta Casa	Generico	Riconosciuto Cod / Dove: App / Chi: Codice #0
3-mar-2016 16 37.42	Absoluta Casa	Generico	Inser. eseguito / Partizioni: 1-8
3-mar-2016 16 37.41	Absoluta Casa	Generico	Riconosciuto Cod / Dove: Tastiera #0 / Chi: Codice #0 / Partizioni: 1-8
3-mar-2016 16 37.41	Absoluta Casa	Generico	Rich. Ins. Tot. / Dove: Tastiera #0 / Chi: Codice #0 / Partizioni: 1-8

At the top of the table it is also possible to export the events shown in the table below saving a file that you can open with Excel or Notepad.



imavis

www.panelcontrol.eu

IMAVIS S.r.l.

Largo Perderzana, 2 - I-40055 Castenaso (BO) - Italy - +39 051 6012120

Via Trento, 5/2 - I-16145 Genova - Italy - +39 010 8609370

info@imavis.com - www.imavis.com